



# LAUSD

UNIFIED



May 29, 2025  
Charter Committee

---

**Marla Willmott**  
Interim Director, Charter Schools Division

**Jeanette Borden**  
Charter Schools Operations Manager

# Proposition 39 Regulatory Timeline



November 1*	Prop. 39 facilities request from charter school due to District	✓
December 1	District accepts/objects to charter school's in-District ADA projection	✓
January 2	Charter school provides response to District's objections to ADA projections	✓
February 1	District sends Preliminary Proposal of space to charter school**	✓
March 1	Charter school responds to District's Preliminary Proposal	✓
April 1	District sends Final Offer of space to charter school	✓
May 1	Charter school accepts or declines Final Offer	✓
Occupancy	Site must be prepared for charter school occupancy 10 working days prior to its first day of instruction	

\*Prior to Nov. 1, LAUSD principals complete E-CAR, and the District documents its anticipated space needs for following school year.

\*\* Board of Education must first make a finding that the charter school that cannot be accommodated at a single site and adopt a written statement of reasons explaining the finding

# Region Engagement

## Space Allocation Process: 2025–26 School Year



- Collaboration with District divisions to review the status of charter schools' facilities requests.
- Review of District space inventory in connection with final offer recommendations, including those at multiple school sites.
- Selection of specific spaces to be offered to charter schools and identification of any campus reconfigurations to support optimal site operations.
- Communication with respective Board Member offices and school communities, as appropriate.

# May 1 Update: 2025–26 Prop. 39 Facilities Requests



<b>Submitted Facilities Request</b>	<b>Withdrew Facilities Request</b>	<b>Ineligible Facilities Request</b>	<b>Accepted Final Offer</b>	<b>Declined Final Offer</b>	<b>Signed Alternative Agreement<sup>1</sup></b>	<b>No Response to Final Offer</b>
38	1	1	24	1	11	0

<sup>1</sup> As permitted by Proposition 39, the District reached mutual accord with certain charter schools to enter into alternative agreements for occupancy of District facilities.

# 2025-26 Prop. 39 Facilities Requests

## Breakdown by Board District and Region



As of May 27, 2025:

Board District	# of Charter Schools	# Co-locations
1	7	7
2	4	5
3	3	3
4	6	7
5	7	8
6	6	8
7	3	3
<b>TOTAL:</b>	<b>36*</b>	<b>41</b>

Region	# of Charter Schools	# Co-locations
East	7	9
North	9	12
South	8	8
West	11	12
<b>TOTAL:</b>	<b>35</b>	<b>41</b>

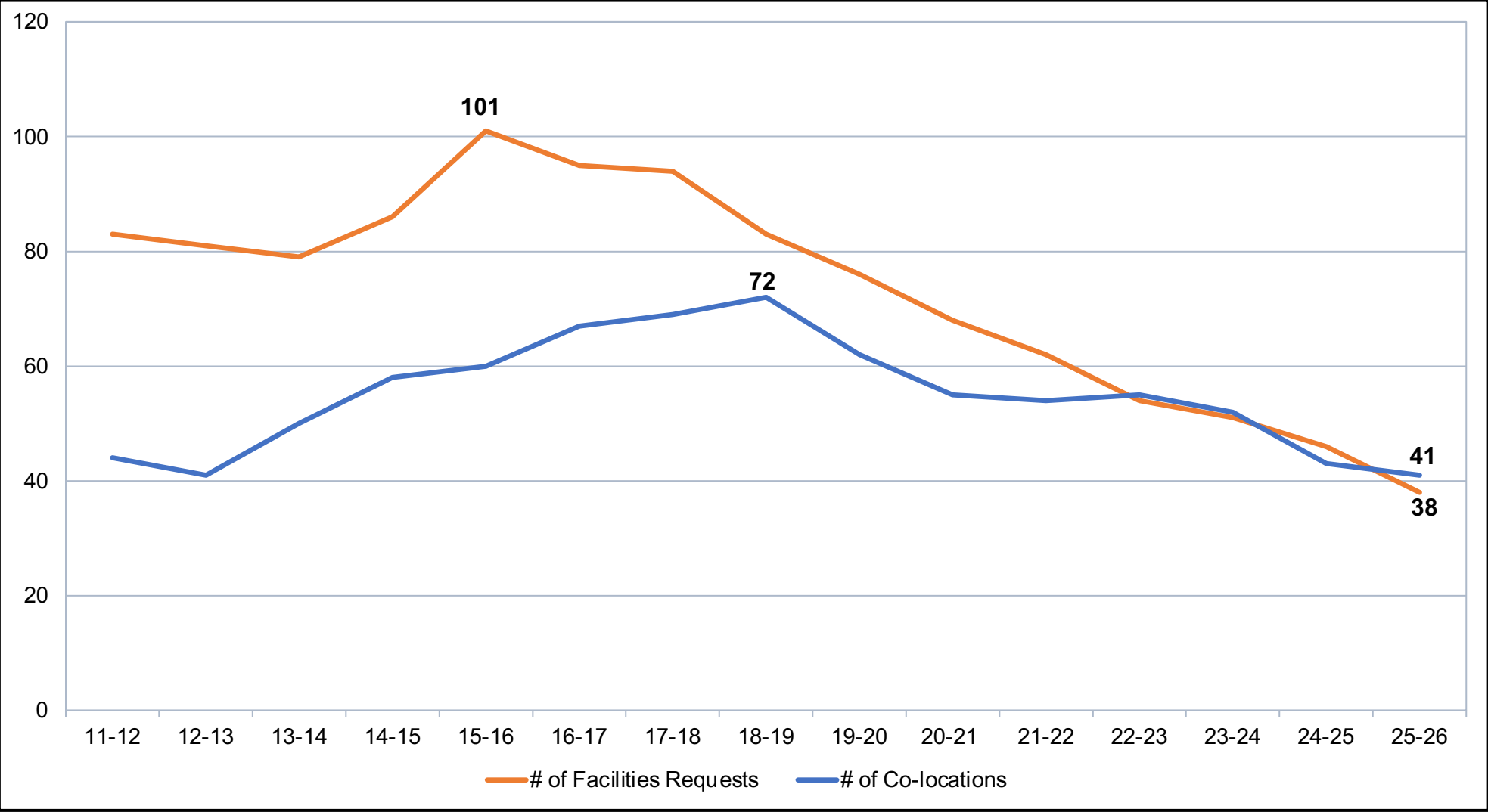
\*One charter school is co-located (multi-site) within Board District 3 and Board District 6. As a result, it is included in the charter school counts for each district and is therefore counted twice in the total number of charter schools.

# Update on 2025–26 Facilities Requests Review



- All 41 charter co-locations are existing (no new co-locations).
- Of the existing charter co-locations, the current allocations are projected to change as follows:
  - 22 are projected to have no change.
  - 4 are projected to have growth.
  - 15 are projected to have reductions.
- 6 charter schools are identified to occupy multiple District school sites.
- Additional potential alternative agreement concepts continue to be assessed.

# Prop. 39 Over Time



# Snapshot of Facilities Requests Overtime



## Decline in Prop. 39 Facilities Requests:

- In the 2015–2016 school year, the District received **101** facilities use requests.
- In the 2025–2026 school year, the District received **38** facilities use requests.
- This represents a **decrease** of more than **62%** over a ten-year period.

## Decline in Number of Co-Locations

- In the 2018–2019 school year, the District had **72** co-locations.
- In the 2025–2026 school year, the District will have up to **41** co-locations.
- This represents a **decrease** of more than **56%** over a seven-year period.

## Reduction in Seats Provided:

- In the 2017–2018 school year, the District provided nearly **23,000** in-district seats.
- Projections for 2025–2026 indicate an estimate of **9,334** in-district seats to be provided.
- The projected number of in-district seats to be provided in 2025–2026 reflects a **reduction** of approximately **59%** compared to the 2017–2018 school year.



# Next Steps for 2025–26 School Year



## In May and Continuing Throughout the Summer

- Charter Schools Division (CSD) staff support Region Offices in communicating with District principals regarding next steps in the co-location process.
- District staff will undertake preparations to make campuses ready for charter school occupancy.

## During May and June

- The District hosted an operations meeting on May 21, 2025, for co-located District and charter school administrators which included information on:
  - District policies applicable to charter schools
  - Best practices for a successful co-location
  - Shared Use Agreement (SUA) negotiations
  - Operational planning for the new school year
  - Safe School Plan Integration

## 10 Business Days Prior to Charter School's First Day of Instruction

- Charter schools that have accepted final offers or executed alternative agreements will be granted access to occupy the school site.

# Over-Allocation



- Over \$11.4 million of over-allocation reimbursements redirected back to 69 different District host sites.
- At present, all active charter schools are current on their payments to the District.
- For the 2023-24 school year, 7 charter schools were determined to be over-allocated.
- If any charter school was over-allocated in the 2024-25 school year, the District will issue an invoice no later than August 15, 2025.

**Thank you  
&  
Questions**

